

# Ashton News



Ian McMillan and Tony Husband present:

## *A CARTOON HISTORY OF HERE*

A COMIC CARTOON AND A JOLLY GOOD LAUGH  
\* FOR AUDIENCES 7 TO 107\*

**THURSDAY 1 MAY**

**Ashton Village Hall  
8.00pm**

An hilarious live-action cartoon starring friendly folks, fantastic fortunes, dazzling ambitions and tender moments. Created by tonight's audience with Yorkshire poet, broadcaster and comedian **Ian McMillan**, and Cartoonist of the Year **Tony Husband**.



Tickets £7.00 available from **881594** or **Ashton Post Office**. Doors/bar open at 7.15pm.

### **Lent Lunches 2008**

The last of this year's Lent Lunches will take place on **Friday 14 March** at **The Old Farmhouse, Elmley Road** from **12.30 pm**. Please come along for home-made soup, rolls and cheese and enjoy good company in a good cause. All donations go to St Richard's Hospice. If you need transport or have any other queries, please contact **Alex and John Dodge 881487**.

### **Easter Sunday in St Barbara's Church**

All are warmly welcome to a **Family Communion Service** in **St Barbara's Church** at **9.30am** on **Easter Sunday, 23 March**, which will be followed by an Easter Egg Hunt for the children, and Hot Cross Buns for everyone.

### **St Barbara's Church Annual Meeting**

This will now be held at **7.30pm** on **Tuesday 25 March** in **St Barbara's Church**. Coffee or tea, and cake will be available from 7.00 pm. This meeting is open to **all Ashton residents**. The observant among you will notice that this is the *third* date published for this meeting - hopefully the final one this time!

*John Dodge and Alastair Humphrey, Churchwardens.*

## **PARISH MUSIC**

**Prize Winning Piano and Cello Recital**

**Saturday 29 March 2008**

**St Barbara's Church Ashton under Hill 8pm**

**Admission £7 – students free**

**Joseph Middleton** and **Ashok Klouda** will perform a programme of works for piano and cello by Schumann, Beethoven, Martinu, Dvorak, Britten and Debussy.

Joseph has played for Parish Music on two previous occasions, and has won several major prizes this year including the Pianists' prize at the Wigmore Hall, the MBF Accompanists' prize at the Kathleen Ferrier Awards and the Yamaha Birmingham Accompanist of the Year Award. He has performed at many festivals, including Cheltenham and Three Choirs, and has played live on BBC Radio 3.

Ashok Klouda was recently selected as a 'Recommended Artist' for the Making Music Trust and was winner of the 2006 J & A Beare Solo Bach Competition. Before joining the Royal College of Music in 2005, Ashok played in the National Youth Orchestra of Great Britain.



**Saturday 26 April 2008**

**Overbury Church 8pm**

**Choral Music**

Tewkesbury Abbey **Schola Cantorum**, together with their director Benjamin Nicholas, and organists Carleton Etherington and Alexander Eadon, will give a concert of varied choral music, from Byrd and Tomkins to the present day.

**Saturday 17 May 2008**

**Teddington Church 8pm**

**Flute and Harp**



**The Daphnis Duo**, Jane Spiers, flute, and Catherine White, harp, will play music by Debussy and Mozart, as well as delightful pieces by lesser-known composers from various eras, including the Naiades by William Alwyn.

**Tea on the Lawn at Rails End Nursery  
Sunday 11 May 3.00 - 5.00pm.**

- ☼ Tea and homemade cake on sale
- ☼ Live music from Smooth Sounds ☼ Photo display
- ☼ Raffle in aid of Marie Curie Cancer Care



# Ashton under Hill Open Gardens 2008



[www.ashtonopengardens.co.uk](http://www.ashtonopengardens.co.uk)

This year's Ashton Open Gardens will be held on **Saturday 7 and Sunday 8 June**. We had excellent weather and a record 1500 visitors last year, so we're hoping for another bumper weekend in 2008. This year we'll be open for longer, between 1.00pm and 6.00pm each day. This is a major fundraising occasion for St Barbara's Church and for the Community Centre, as well as being an enjoyable occasion for the village and our many visitors. Please make a note of the dates in your diary!

We rely on many willing volunteers to help on the day – so even if you can only spare an hour or so to assist with things like programme sales, car parking, catering, plant stalls or point duty, your time would be very much appreciated. If you can help in any way, please contact **John Kenrick 881431** or by email at: [johnkenrick@btinternet.com](mailto:johnkenrick@btinternet.com).

If you think you might like to open your garden - whether large or small, formal or cottage-style – and haven't done so before, **John Dodge** would love to hear from you on **881487**. We're planning a 'green' theme for 2008, so if you're big in composting, conservation or recycling we'd especially like to hear from you!

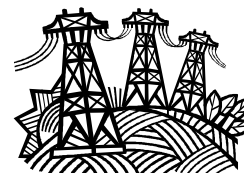
*Malcolm Nelson 881778 [marketing@ashtonopengardens.co.uk](mailto:marketing@ashtonopengardens.co.uk)*

**Julian Alington** would like to thank the many people who sent him cards and messages of condolence over the death of his wife Jean.

There will be a service of thanksgiving for her life in St Barbara's Church at 3pm on **Saturday 5 April** to which all are welcome.

## Undergrounding of Overhead Electricity Lines

The process of obtaining consent from individuals for undergrounding electricity lines on or near their properties is now under way. Many villagers will have received letters from Central Network's consultants Wse Ltd. Once the necessary consents have been received the schemes can proceed. I understand the village has been divided up into four separate schemes. Contrary to what I was told earlier, some high voltage lines are included for undergrounding; in particular, the lines beside the Playing Fields are part of the scheme. No dates have been given but assuming prompt return of consents, it is possible that work could start in spring 2009.



*David Hancock*

## Beckford Open Gardens and Flower Festival 2008

**Saturday 24 May  
& Sunday 25 May  
1.30 to 6.00pm**

[www.beckford-village.org](http://www.beckford-village.org)

## MSS Cake Break Day

Please support the **Multiple Sclerosis Society** at a **Cake Break** on **Friday 2 May**. Coffee or tea and a scrumptious selection of homemade cakes will be served from **10.30 am to 4.30 pm** at **The Old Farmhouse, Elmley Road**.

The valuable work of the MS Society into researching this crippling and unpredictable disease is funded almost entirely by voluntary contributions. The Society also assists people with MS in many practical ways in their daily lives. All the funds raised at the Cake Break will go to the local MS Society Branch. If you need transport or would like any further information, please contact **Alex Dodge 881487**.

## Parish Council News

- **Ashton Clean Up Morning 2 February:** A sincere thank you to everyone who turned out for our annual clean up. We had a good morning and collected over 20 bags of rubbish.
- As you probably know Parish Councillor Simon Hague has kindly taken on the role of **Flood Warden** for our village. We are looking for volunteers to assist Simon and co-ordinate relief e.g. blankets, warm food and so on in the event of any future emergencies. Simon will have access to the village hall and refuge can be offered there to anyone stranded. If you feel you can help please contact Simon on **882249**. Many thanks.

Forthcoming Parish Council Meetings are on **11 March 2008** (also the Annual Parish Meeting) and **13 May 2008** (also the Annual Parish Council Meeting). Members of the public are welcome to sit in on all the bi-monthly Parish Council meetings, and at every meeting some time is set aside for the public to ask questions and express their views. All meetings are held in the Green Room from 7.30pm. The Agenda and Minutes of each of these meetings is published on the Ashton website: [www.ashtonunderhill.org.uk](http://www.ashtonunderhill.org.uk)

*Jeff Fletcher, Chairman, Ashton Parish Council*

**Best wishes for Easter from the Ashton News team**

## Community Information

If your group needs a speaker, then the **Community Safety Officer** from Hereford & Worcester Fire and Rescue Service would be very happy to come along and give a presentation. Please contact **Brian Thompson on 07795 238197** or email [bthompson@hwfire.org.uk](mailto:bthompson@hwfire.org.uk). The presentation can then lead to a visit for a Home Fire Safety Check, which will look at a range of fire safety issues, give advice and a free smoke alarm can be fitted if needed.

**Evesham Shopmobility** - Out and about in Evesham? Is mobility a problem? If so contact **Denise at Shopmobility on 01386 49230**. Shopmobility is situated on the top floor of the car park at the Riverside Shopping Centre, Bridge Street, Evesham.

**Warm Front Grants** - you could claim a grant of up to £2700 from the Government, if you own your home or rent it from a private landlord, you are on certain benefits and you are disabled or have a child under 16, or are 60 and over. A grant can provide: energy efficient light bulbs; cavity-wall insulation; loft insulation; hot-water-tank insulation; draught proofing; gas, electric or oil central heating or glass-fronted fire. To find out more please call **0800 316 2814** Monday-Friday 8am to 6pm.

The **Workwise** scheme offers individual transport solutions for Worcestershire residents wanting to access employment and training opportunities but who are unable to do so because they do not have access to suitable transport - such as those living in rural areas with no regular public transport services. The scheme includes personalised travel planning and moped loans at a cost of £5 a week for up to 12 months. Those who believe the scheme may be able to benefit them must be 16 years or over, live in Worcestershire, have an offer of employment, training or further education with a start date and have no other suitable means of transport available. The Workwise scheme also provides Compulsory Basic Training (required by law), safety equipment, insurance of the vehicle, 24 breakdown cover and full maintenance and servicing.

There are now 50 mopeds for Worcestershire residents that are issued on a first-come, first-served basis for those who meet the eligibility criteria. Employers who have difficulty recruiting employees due to their rural location can also contact the scheme for advice and possible financial assistance. For further information on the Workwise scheme or to receive an application form call **01905 765 765** or visit [www.worcestershire.gov.uk/workwise](http://www.worcestershire.gov.uk/workwise)

*The Star is under new management and there's a new seasonal menu featuring some of the county's best local produce, including sausages from the Spires family farm and vegetables sourced from a local farm shop. There's also a new pets' corner. Why not give your new-look local a try?*



**Christine and Jeremy King** would like to thank all the residents and visitors to Ashton for their contributions to the AIR AMBULANCE CHARITY during 2007. You helped to raise the princely sum of £970, which is an excellent effort on your part. We, for our part, will try and keep the supply of plants and produce coming during 2008.

### St Barbara's Churchyard Clear

Please come along on **Saturday 5 April** between 9.30 am and 12.00 noon and help to keep your village churchyard looking neat and tidy. It would be helpful if you could bring your own tools - refreshments will be provided. Apart from the grass and hedge cutting, the maintenance of St Barbara's churchyard is dependent entirely on voluntary help. If you can spare an hour or two it would be greatly appreciated. Thank you.

*John Dodge 881487 and Alastair Humphrey 881479*

## Ashton Community Centre

Many thanks to those who completed the recent questionnaire on youth activities. We have had a number of suggestions and are looking into possibilities.

The **Community Centre AGM** is on **Wednesday 16 April** at 8pm in the Green Room. Please come along find out what goes on behind the scenes to keep the Village Hall and Playing Fields operating. If you have any concerns or ideas for improvement we would be glad to hear them.

### Can you Help?

Would you be prepared to take on the task of checking the children's play area? It is not an onerous job, but a very necessary one. The play equipment needs to be visually checked once a week and every month things like the tightness of bolts needs to be checked. If you are in the play area it will only take a few minutes of your time to carry out a task to ensure the safety of the children. So is there a Mum or Dad out there who could help out? Please contact **Tony 881555** or **Penny 881594**. Our thanks go to Tess and James Savage who have been doing this job for the last few years.

**Ashton News will next be published in early May. If there's something you'd like included please let us have details by Friday 2 May.**

### Ashton News Contacts:

**Malcolm Nelson**  
The Old Granary  
The Groaten, 881778  
[malcolm-nelson@lineone.net](mailto:malcolm-nelson@lineone.net)

**John Scotland**  
The Yarde  
Elmley Road, 881594  
[JPScotland@home.gb.com](mailto:JPScotland@home.gb.com)

**Advertise your event in Ashton News - it's free and we deliver to every home in the village**